

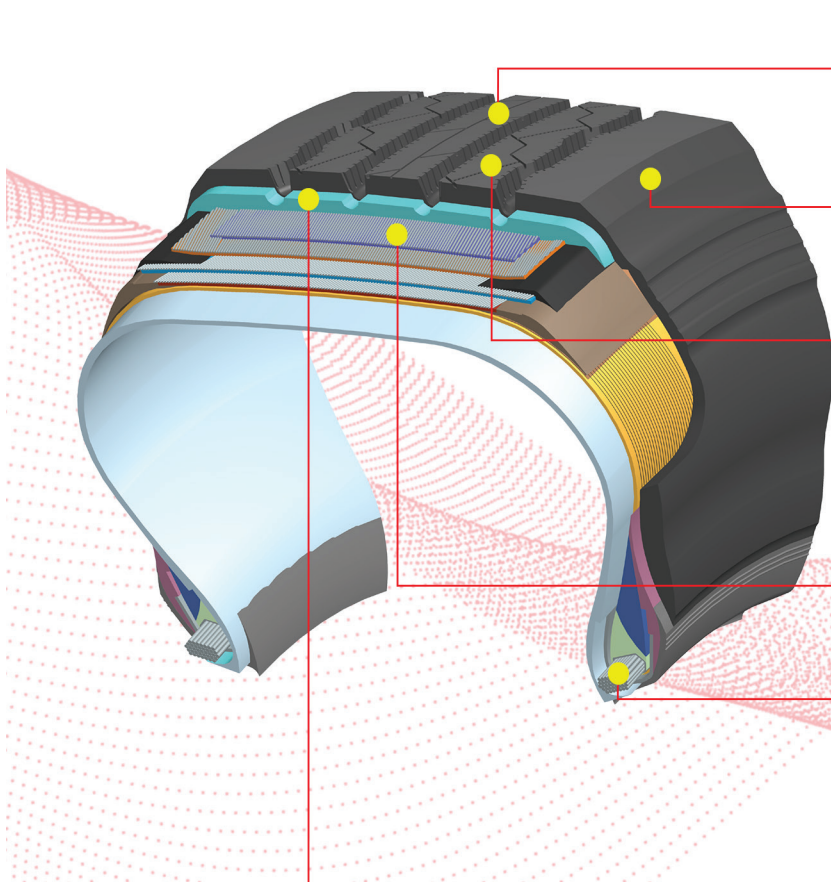
More *Durability* More *Value*

# RTR51 Trailer Tire

Fuel-efficient tire for trailer application. The Ralson RTR51 tire is designed for optimum mileage and even tread wear for an uninterrupted and comfortable ride

**Line haul** **Regional**

● Recommended ● Acceptable



### Uniform Tread Wear

- Full-depth destressing multi-dimensional sipes help prevent irregular wear and rib tearing

### Consistent Shoulder Wear

- Chamfered solid shoulder to counter lateral forces in high-scrub applications, minimizing uneven wear

### Optimized Pressure Distribution & Enhanced Casing Longevity

- Corrugated cooling fins ensure efficient heat dissipation
- Balanced rib ratio maintains even pressure distribution, reducing stress on the casing

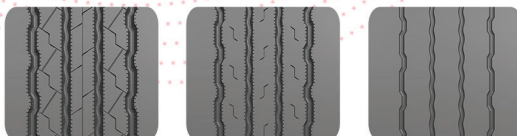
### Extended Retreadability & Durability

- Four belt package optimizes tread rigidity for improved wear performance and casing life
- Hexagonal bead bundles having optimized wire layers to reinforce the bead region, reducing fatigue and extending casing life
- Designed for multiple retread and prolonged usability

### Improved Fuel Efficiency

- Proprietary cool compound technology **EET** with low rolling resistance for superior fuel economy
- Low-heat buildup compound minimizes internal casing temperature for extended casing life

### Wear Progression



25%

50%

75%



SKU	SIZE	PLY RATING /LOAD RANGE	RIM	SINGLE MAX LOAD/PRESSURE (LBS/PSI)	DUAL MAX LOAD/PRESSURE (LBS/PSI)	OVERALL DIAMETER (INCH)	TREAD DEPTH (32NDS)	REVS PER MILE	SLR (INCH)	MAX SPEED (MPH)	WEIGHT (LBS)	TIRE TYPE
10000601	11R22.5	14G	8.25	6175/105	5840/105	41.0	12	503	19.1	75	114	TL
10000611	11R24.5	14G	8.25	6610/105	6005/105	43.0	12	479	20.1	75	118	TL
10000281	295/75R22.5	14G	9.00	6175/110	5675/110	39.7	12	520	18.5	81	111	TL